

ED STD 3 Hinged Door Damper

The DICTATOR ED STD 3 hinged door damper is designed for the final damping of hinged doors being closed by a spring. The damper is installed in the door frame and is accessible through the lift shaft.

The piston rod of the damper points through the door frame and makes contact with the side of the door when the door is closed. To protect the sheet steel on the door from wear, a special hardened counter plate for the piston rod needs to be fixed to the point where the piston rod meets the door.

The ED STD 3 damper works hydraulically. Its special feature is the oil tank on top which is connected to the damping cylinder. This guarantees that the ED STD 3 slows down and effectively damps the door as soon as it hits the piston. If the cylinder was made only from a simple tube, air in the cylinder could significantly reduce the damping effect.

High performance and reliability are achieved by a special guide for the piston rod in the damper and a set of high quality seals. A scraper ring of polyurethane prevents the soiling of the guiding and sealing elements.



Technical Data

Damping fluid	special hydraulic oil
Body	aluminium
Counter plate	spring steel or hardened CrMoV-steel
Operating temperature	0° to 50 °C
Door weight	20 to 200 kg
Make of doors	Stahl; Otis: model ED STD 3L

Installation



Insert the damper from the lift shaft into the door frame so that the piston rod points through a hole of 15 - 20 mm in the frame to the door. Finally secure the damper by screwing it to the frame - two screws on the front and one in the back.

Attention: make sure the two screws at the front plate are not tightened too much as this might slightly distort the front plate and hinder the free movement of the piston rod.

The counter plate ① supplied with the damper must always be fixed to the door. When closing the door the piston rod should hit the middle of the counter plate.

Setting

To achieve optimal damping close the door several times to expell any air left in the damping cylinder prior to installation.

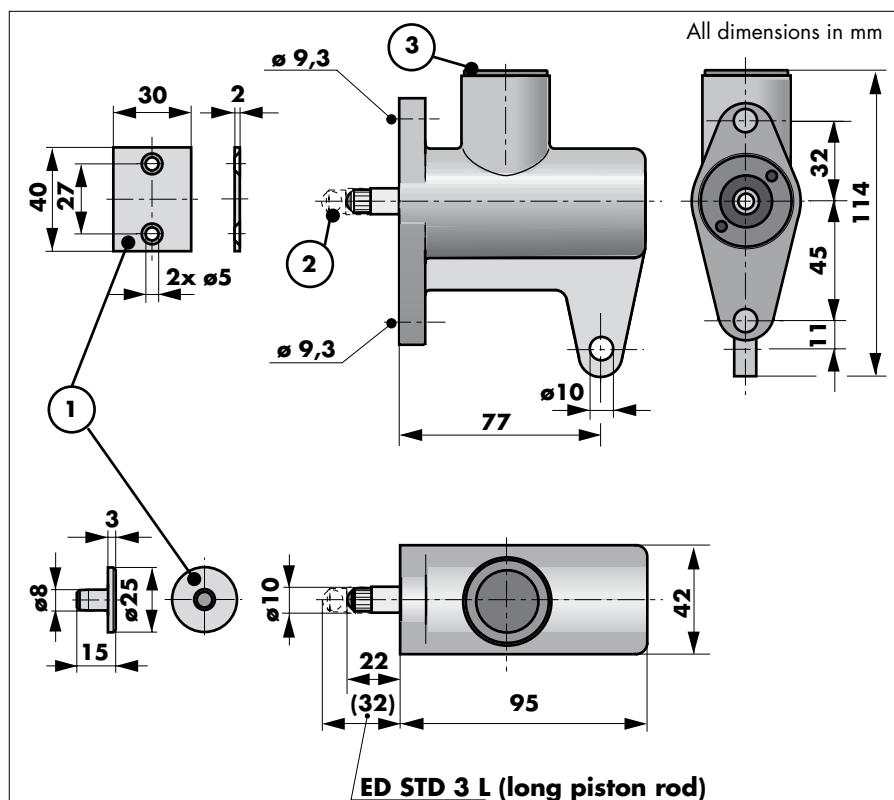
Adjustment

With the piston rod **fully extended** grasp the knurled part ② with a pair of pliers and turn it while pulling: clockwise will reduce the damping, anti-clockwise will increase it. Please **make sure** that you do not damage the polished surface of the piston rod!

Maintenance

The ED STD 3 damper does not require maintenance. In case of being soiled it is enough to carefully clean the piston rod. By removing the cap ③ you can check the oil filling.

Dimensions



Order Information

ED STD 3 with rectangular counter plate	part no. 203401
ED STD 3 without accessories	part no. 203401L
ED STD 3 L with round counter plate	part no. 203402
Rectangular counter plate for Stahl doors	part no. 205141
Round counter plate for Otis doors	part no. 205188
Hydraulic oil for ED STD 3 (1 litre), for refilling	part no. 205099