

Access Control Systems

Interlock control systems often comprise rooms where only specially authorised people are admitted. These rooms require an access control system in addition to the DICTATOR interlock control system.

Access control can be effected either by a PIN or by a contactless card reader.

The systems presented on the following pages are compact units. They combine in one set the inserting/reading unit and the control unit. This is ideal for single door units as there is not much wiring involved.

Both models allow to adjust the time span during which access is possible after having entered the pin/card. Another possibility is to open the door with the PIN/card and to lock it again with the next entry. Two relay outputs permit to pass on information.

All units dispose of LED indicators the function of which is in parts freely programmable.



Product Range

Access control system SU2

PIN

number of PINs: 60

Access control system KR1000

PIN, contactless with card

number of PINs: 1010



Access Control System SU2

The access control system SU2 represents a simple system, offering high safety at a reasonable price. The access control is realised by a PIN.

We offer several versions:

- as surface type either in a plastic box with plastic keys or in a stainless steel box with stainless steel keys. These versions are with sabotage surveillance.
- for flush mounting in a stainless steel installation frame with metal keys. This version is not with sabotage surveillance, as we do not supply the casing.

The keypad is illuminated either permanently or just when touching a key (adjustable).

Technical Data

Voltage	12 VDC \pm 10 %	24 VDC \pm 10 %
Power consumption max.	200 mA	100 mA
Power consumption non-operated	20 mA / 10 mA	
IP rating	IP 65	
Operating temperature	-30 °C to +50 °C	
Relay outputs	make/break contact 1: 5 A, 30 V	
	make/break contact 2: 1 A, 30 V	
Programmable time span	1 - 99 seconds or permanent in/out	
Operation	PIN	
Number of PINs	60	
Analysis of wrong PINs	30 seconds alarm signal	
Displays/alarm	2 LEDs are freely programmable	
	integrated buzzer	
Manipulation protection	unit blocks after 8 wrong entries	
	buzzing	
Programming level	protected by code	
	During programming the yellow LED is illuminated.	
Keypad	illuminated (adjustable)	
Dimensions (H x W x D)	107 x 85 x 37,5 mm	

As accessories we offer safety screws for fixing the casing and the keypad respective the front plate and the keypad. As for these screws you need a special tool, the safety of the installation is increased.

Order Information

Access control system SU2, plastics, surface type	part no. 710870
Access control system SU2, stainless steel, surface type	part no. 710871
Safety screws (4 pieces)	part no. 710879



Access Control System KR1000

Same as with the type SU2 the access control system KR1000 forms a unit of entering and controlling device. This makes it ideal for single installations.

The access control is possible either by PIN or by card.

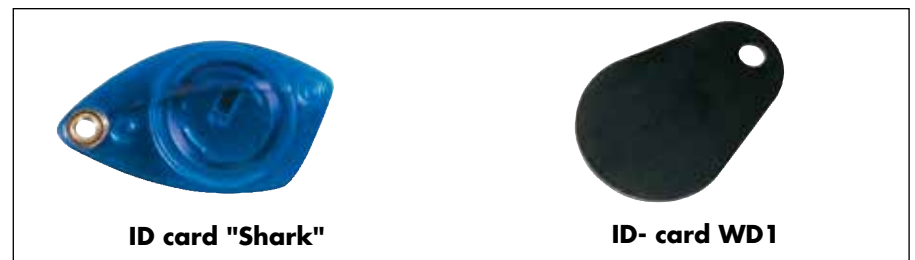
The access control system KR1000 is completely made from stainless steel. It can be operated with 12 or 24 VDC/AC. The keypad is always illuminated.

For the contactless access control per card we supply three different models: a card in the format of a credit card and two differently formed key fobs.

Technical Data

Voltage	12 VDC/AC ±10 %	24 VDC/AC ±10 %
Power consumption	220 mA	110 mA
Power consumption non-operated	80 mA	40 mA
IP rating	IP 65	
Operating temperature	-20 °C to +50 °C	
Relay outputs	2 make/break contacts with switching capacity 2 A, 30 VDC or 0.5 A, 125 VAC	
Programmable time span	1 - 90 seconds	
Operation	PIN and/or card Card type: 125 kHz, 64 bit, EM 4100/4200	
Number of PINs	1010	
Displays/alarm	2 LEDs (red-yellow-green or yellow-green), freely programmable, integrated buzzer	
Manipulation protection	unit blocks after 5 wrong entries for 30 s, buzzing	
Programming level	protected by master code or card Programming is indicated by LED.	
Keypad	permanently illuminated, blue	
Dimensions (H x W x D)	120 x 76 x 28 mm	
Connection cable	3 m	
Casing	stainless steel	

ID Cards



Order Information

Access control system KR1000, surface type	part no. 710880
ID card, credit card format (not shown), 125 kHz, 64 bit	part no. 710876
ID card "Shark" as key fob, 125 kHz, 64 bit	part no. 710877
ID card WD1 as key fob, 125 kHz, 64 bit	part no. 710878

